

AP2390 72-Port Analog VoIP Gateway



VoiceFinder AP2390 is a new cutting edge VoIP gateway supporting maximum 72 ports of analog voice interface. Analog Interface of AP2390 provides an optimized call scenario when it interoperates with conventional PBX. Compact cost effective design and system architecture of AP2390 provides customer satisfaction in high quality, performance and system reliance. VoIP gateway combining IP-PBX is now suggesting a new model for a main voice communication solution. In order to be a part of advanced VoIP communications naturally in the future, making an excellent choice of choosing VoIP gateway is essential. VoiceFinder AP2390 is a Multi-Port VoIP gateway providing total 72 analog interface ports, and so on. It is suitable for general enterprises, large and public offices. It has functions as a media gateway which interoperates with IP-PBX and it enables to replace mid and large size analog PBX. Especially AP2390 provides an optimal solution of VoIP communications in telephony environments that using telephone lines and PBX to get connect with a head office. AP2390 is designed to provide high-performance service as a media gateway. It provides LEDs on the front panel indicating operational status, line status, and LAN Interface status of gateway. Two of 10/100Mbps Fast Ethernet port and RS232C console interface are the base for delivering various network services such as LAN-to-LAN routing, Bridge and NAT/PAT service etc. Various VoIP gateway series of AddPac is approved for its high performance and reliability in world wide markets. AddPac provides highly advanced VoIP services in order to meet demanding and evolving business requirements of customers. Especially AP2390 has been developed through years of experiences and accumulated know-how from existing enterprises and communication markets. AP2390 provides concurrent triple stack such as H323, SIP and QoS (Quality of Service) for high quality of communication service. This will satisfy customers with high expectation.

tions in telephony environments that using telephone lines and PBX to get connect with a head office. AP2390 is designed to provide high-performance service as a media gateway. It provides LEDs on the front panel indicating operational status, line status, and LAN Interface status of gateway. Two of 10/100Mbps Fast Ethernet port and RS232C console interface are the base for delivering various network services such as LAN-to-LAN routing, Bridge and NAT/PAT service etc. Various VoIP gateway series of AddPac is approved for its high performance and reliability in world wide markets. AddPac provides highly advanced VoIP services in order to meet demanding and evolving business requirements of customers. Especially AP2390 has been developed through years of experiences and accumulated know-how from existing enterprises and communication markets. AP2390 provides concurrent triple stack such as H323, SIP and QoS (Quality of Service) for high quality of communication service. This will satisfy customers with high expectation.

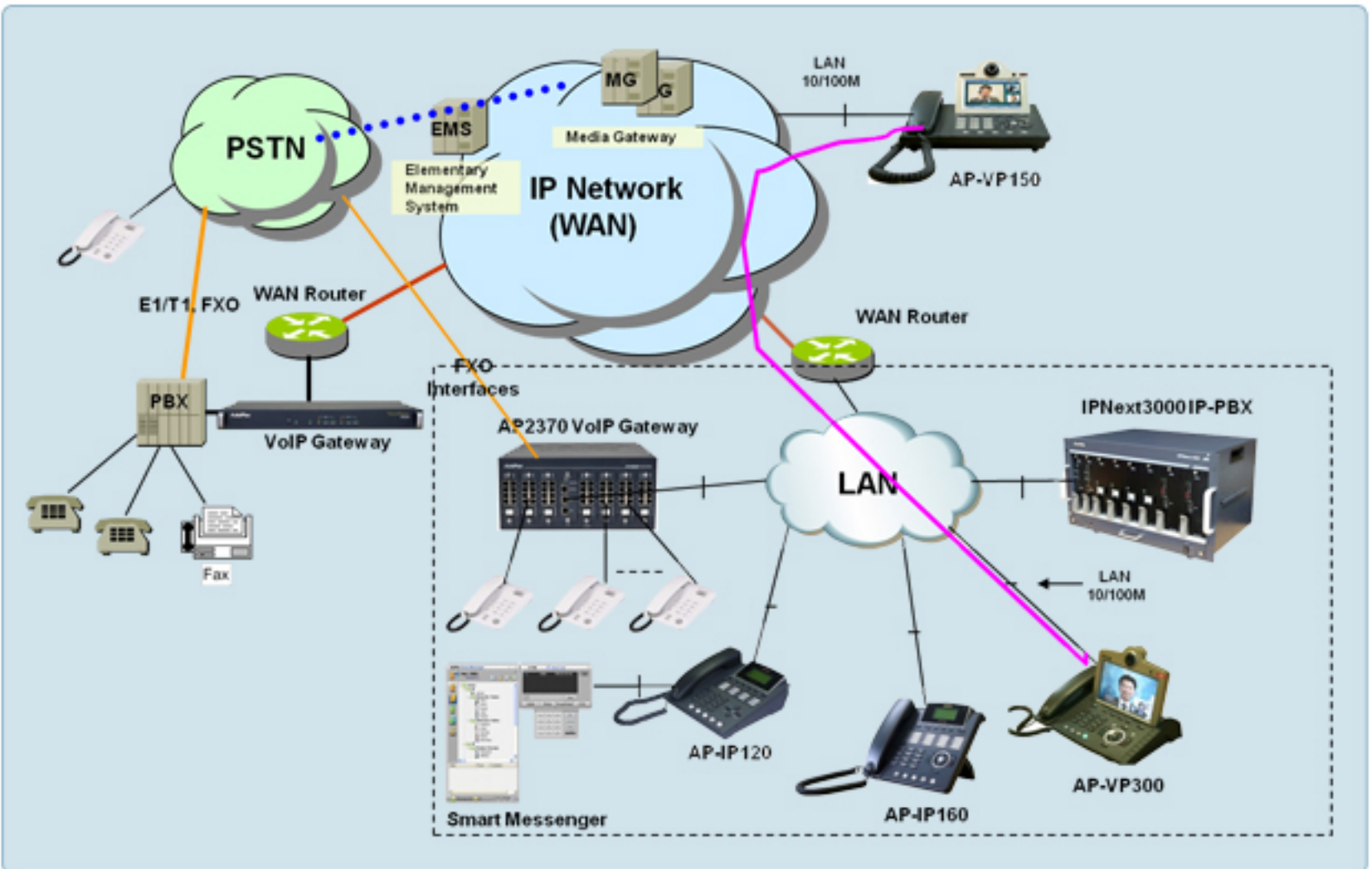
Major Feature

Overall Features

- H.323/SIP Dual Concurrent Stack Embedded
- High Performance RISC & Programmable DSP Architecture
- Nine(9) VoIP Module Slots : 8-Port VoIP Module
- Maximum 72-Port Analog VoIP Interface
- Two(2) 10/100Mbps Fast Ethernet (IP Share ,etc)
- High Performance LAN-to-LAN Routing Capability
- G.711/G.726/G.723/G.729, T.38 Fax , VAD, etc
- Powerful Network Protocols (PPPoE, DHCP, Static Routing, etc)
- Firmware Upgradeable Architecture
- Smart NMS for Large Scale Deployment
- Smart Web Manager for Management
- Advanced Voice QoS Mechanism
- Compact Design with Internal Power Supply



Network Diagram



Youtube



72-Port Analog VoIP Gateway
AP2390

AddPac Technology Co.,Ltd.

AddPac Texhnology (Korea-Head Office)
Phone +8225683848
Email sales@addpac.com